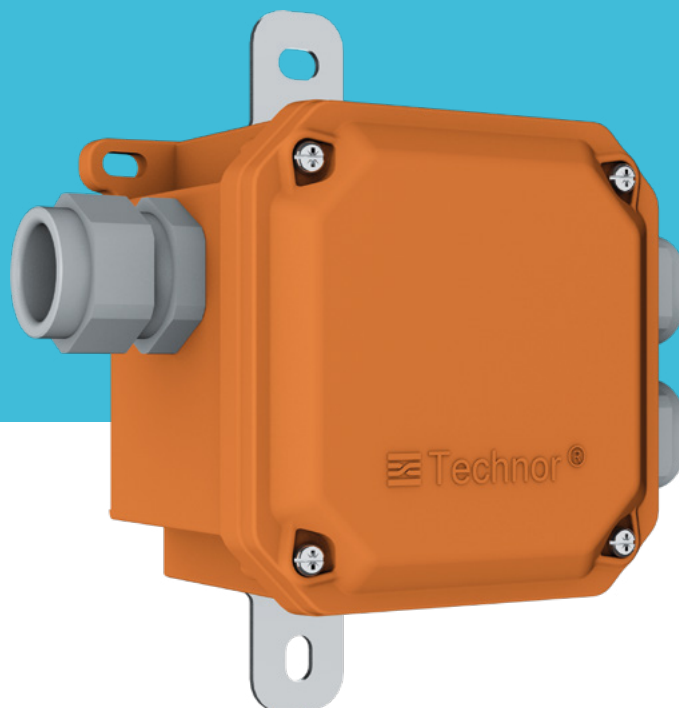


EMERGENCY LIGHTING

BOX B2 FIRE-RESISTANT NF C 32-070 (DIN 4102-12 TO COME)



IP66
IP67



2 x 1,5 mm²
to 5 x 6 mm²



GRP



IK08



E90

OTHER FEATURES

Electrical continuity of the main power supply is guaranteed according to NF C 32-070 (DIN 4102-12).

Service terminals

2 to 5 ceramic-isolated steel junction terminals mounted on a specific stainless steel rail fixed to the wall through a stainless steel base plate.

Cables accepted

Armoured and unarmoured cables, stranded or flexible, from 1.5 mm² to 6 mm².

Earthing point

Inside and outside the enclosure.

Modularity box - Options
Other equipment

- Secondary line wiring with MARECHAL® socket-outlet*.
- Accessories for fixing box to cable tray or ladder.

*Contact us for more details.

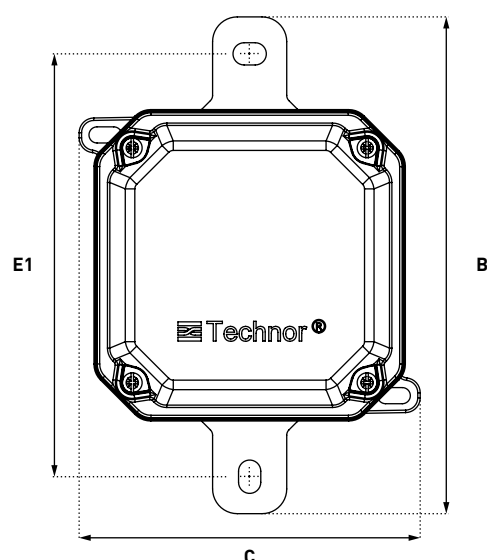
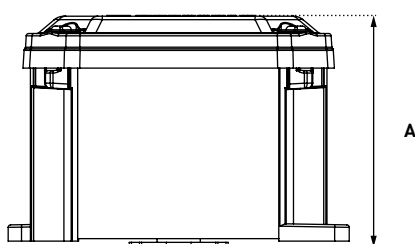
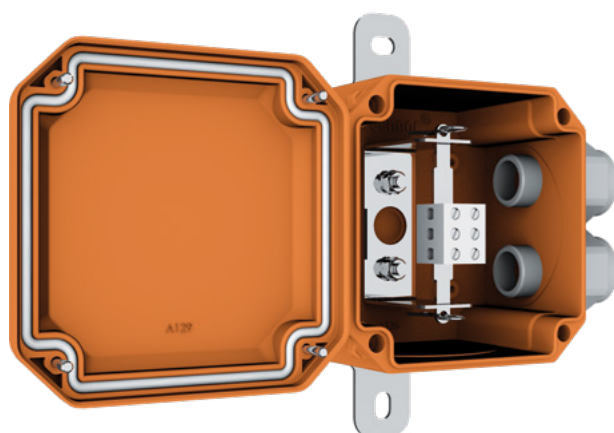
DRAWINGS AND DIMENSIONS

FIRE-RESISTANT JUNCTION BOX

Made from polyamide, these boxes ensure the junction between one or more main through fire-resistant cables. The inter-connection of crossing cables is performed thanks to ceramic-isolated steel junction terminals mounted on a specific steel rail. The box lid, which can be mounted on hinges as an option, is fixed by means of captive stainless steel screws.

BOX B2 FIRE-RESISTANT

Reference	W x H x D in mm	Distribution
91321	120 x 120 x 91	Maximum 4 tap-offs using glands
91361	160 x 160 x 91	Maximum 4 tap-offs using glands



	A	E1	B	C
120x120	94	171	201	138
160x160	94	215	245	178



DOWNLOAD
THE DRAWINGS
ON OUR WEBSITE
marechal.com

EMERGENCY LIGHTING

BOX EXPRESS® XL FIRE-RESISTANT NF C 32-070/DIN 4102-12



IP66



GRP



IK09



NF C 32-070
DIN 4102-12

OTHER FEATURES

Electrical continuity of the main line is guaranteed according to NF C 32-070/DIN 4102-12 - E30 classification.

Tapping terminals

Quantities : up to 5 stainless steel terminals
Technology: Insulation piercing terminal, fixed on a ceramic base (NF C 32-070/DIN 4102-12), or aerial (DIN 4102-12).
Fixing: Wall mounted stainless steel plate by means of the box's plate.

Tapping protection

By circuit breaker fitted to DIN rail

Cables accepted

Armoured and unarmoured cables, stranded or flexible, from 4 mm² to 35 mm², with an external diameter 13 to 29 mm. Configuration with cable cut is also possible.:

Earthing terminal

Inside and outside the enclosure

Fire smoke class

M1F0

Self extinguishing material

UL94 V-0

Modularity box - Options
Other equipment

- Secondary line wiring with MARECHAL® socket-outlet.
- Accessories for fixing box to cable tray or ladder (option).
 - "Power On" signal light (option).
- Possibility to use non-perforating terminals.

DRAWINGS AND DIMENSIONS

JUNCTION BOX WITH OR WITHOUT THE NEED TO CUT THE CABLE

Made from halogen-free glass fibre reinforced polyester compound, these boxes allow a service tap-off from the main through cable with or without the need to strip or cut the main cable. Gaskets allow the immediate positioning of fire resistant cables with a maximum diameter of 29 mm whilst creating an IP66 seal. The box lid mounted on a stainless steel axis is fixed to the box by means of captive stainless steel screws.

BOX EXPRESS® XL FIRE-RESISTANT

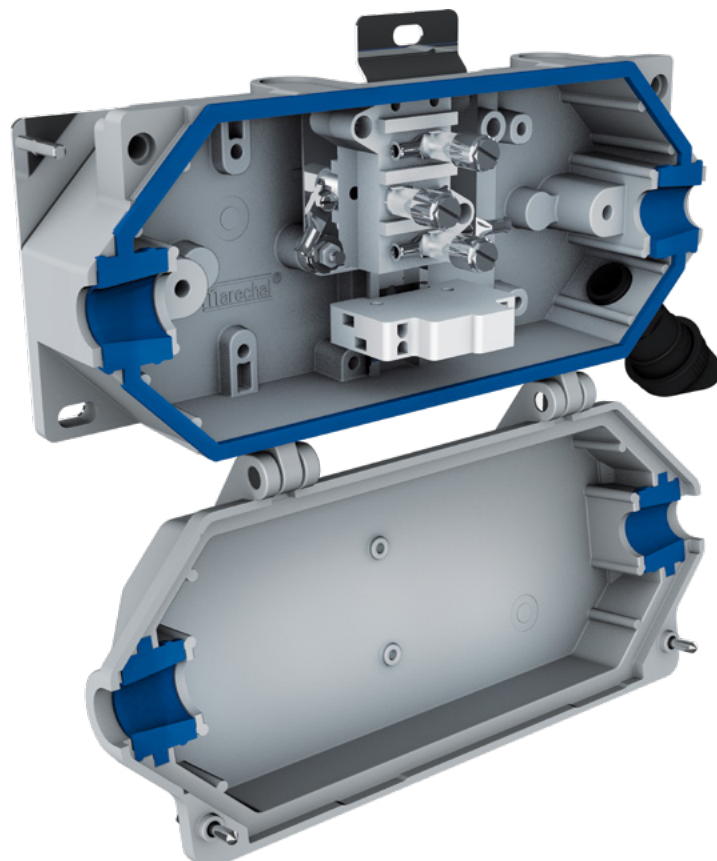
NF C 32-070

Type	Terminals	H x W x D in mm	Distribution
91251	Ceramic	175 x 362 x 99	<ul style="list-style-type: none"> - Maximum 2 tap-offs using 2 sockets - Maximum 4 tap-offs using glands

BOX EXPRESS® XL FIRE-RESISTANT

DIN 4102-12

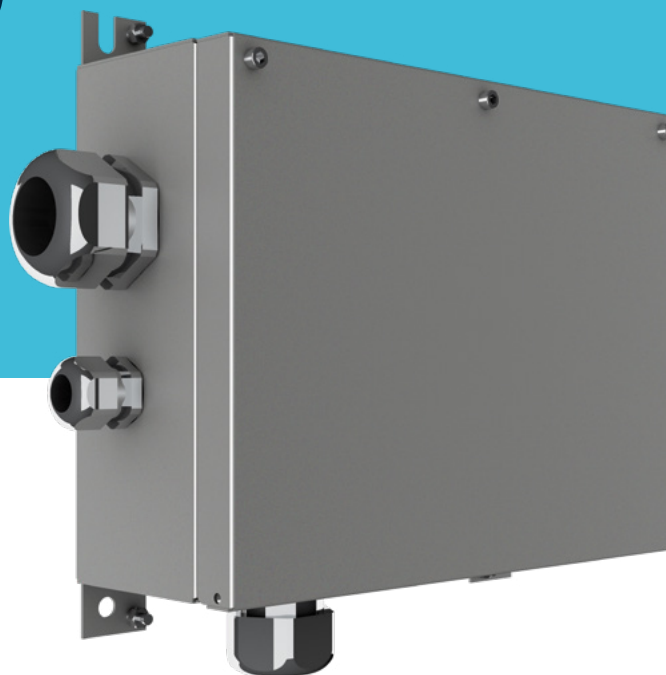
Type	Terminals	W x H x D in mm	Distribution
91252	Ceramic	175 x 361 x 99	- Maximum 2 tap-offs using 2 sockets
91253	Loose		- Maximum 4 tap-offs using glands



EMERGENCY SIGNALLING, SIGNPOSTING

BOX EQINOX FIRE-RESISTANT

NF C 32-070 + DIN 4102-12/E60



IP66/IP67



AISI 316L
STAINLESS STEEL



IK10



NF C 32-070
DIN 4102-12/E60

OTHER FEATURES

Electrical continuity of the main power supply is guaranteed according to NF C 32-070 (91141 type) and DIN 4102-12 (91142 type)

Service terminals	2 to 7 insulation-piercing, stainless steel terminals, fitted into a ceramic base.
Service protection	By circuit breaker fitted to DIN rail
Cables accepted	Armoured and unarmoured cables, stranded or flexible, from 25 mm ² to 120 mm ²
Earthing point	Inside and outside the enclosure
Fire smoke class	M0

Modularity box
Options
Other equipment

- Secondary line wiring with MARECHAL® socket-outlet.
- "Power On" signal light (option).

DRAWINGS AND DIMENSIONS

FIRE-RESISTANT JUNCTION BOX

Made from AISI 316L stainless steel, these boxes ensure the junction between one or more main through fire-resistant cables (in compliance with NF C 32-070 or DIN 4102 or E30/E60/E90 type) Cable glands are fire-resistant and the inter-connection of crossing cables is performed thanks to stainless steel terminals mounted on ceramic plates.

The box lid mounted on hinges is fixed by means of captive stainless steel screws.

BOX EQINOX FIRE-RESISTANT

Type	Norm	W x H x D in mm	Distribution
91141	NF C 32-070	140x200x130	Cable glands or MARECHAL® socket-outlets. Number of inputs/outputs depending on configuration.
91142	DIN 4102-12	200x270x130	
		270x350x130	
		350x350x160	
		350x500x160	
		500x500x160	

